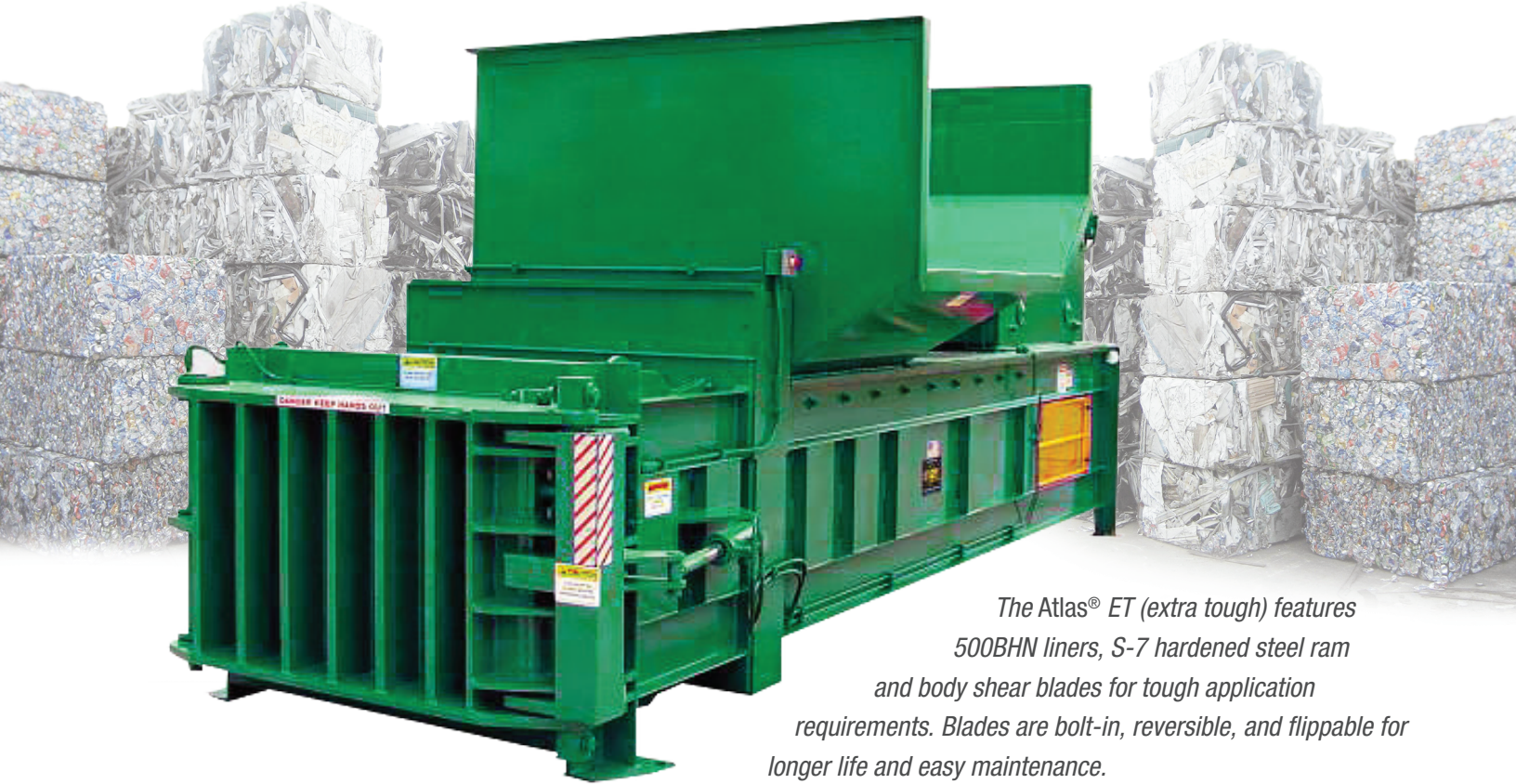


Atlas ET

Horizontal Balers for Non-Ferrous Materials



The Atlas® ET (extra tough) features 500BHN liners, S-7 hardened steel ram and body shear blades for tough application requirements. Blades are bolt-in, reversible, and flippable for longer life and easy maintenance.



Atlas ET Features

- ▼ Heavy construction - perfect for the non-ferrous scrap metal industry
- ▼ Vertical tie-off for baling without pre-processing
- ▼ Programmable controller for automatic or manual cycling
- ▼ Full penetration ram is standard
- ▼ Produces 60" x 30" x 48" bale
- ▼ Wire guides for quick & easy ties through chamber door

The Worldwide Leader in Quality Recycling and Compaction Equipment

Marathon® Equipment is known throughout the world as one of the leading manufacturers of quality on-site recycling products. The Marathon brand has been the industry standard for quality and innovation for more than 50 years, and includes auto-tie balers, manual-tie balers, two-ram balers, MRF systems, conveyors, vertical balers, auger-style compactors, cart dumpers, and a wide array of options for virtually any application.



**Environmental
Solutions Group®**

Atlas ET Horizontal Baler

Overview

Perfect for:

-  Used Beverage Cans
-  Aluminum Siding
-  Aluminum Downspouts and Gutters
-  Automotive Radiators
-  Metal Cans (soup, etc.)
-  Copper Wiring
-  Copper Roofing & Sheets

Why Marathon Equipment Is the Preferred Choice

Marathon Atlas ET (Extra Tough) mid-size horizontal balers offer affordable, highly efficient compaction for non-ferrous scrap. With heavy-duty and stress-engineered construction, the Atlas offers a superior size-to-weight ratio to meet the demands of scrap baling applications. The specially designed bolt-on, replaceable body and ram-shear blades provide optimum performance and ease-of-maintenance, which eliminates pre-cutting of most materials.

The Atlas ET features 400F liners and S-7 hardened-steel ram and body-shear blades for even tougher application requirements.

The Atlas Non-Ferrous Baler is the ideal choice for facilities baling from one to three tons of aluminum and steel cans, aluminum and copper wire, aluminum siding, extrusion, radiators, etc.

Atlas ET Features

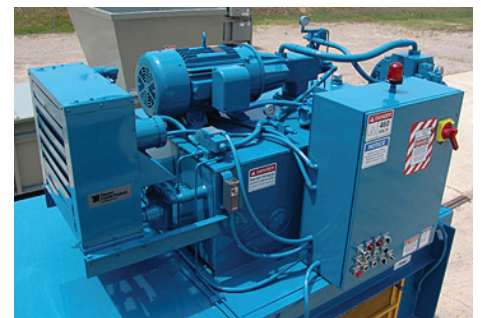
- ▼ Heavy construction – perfect for the non-ferrous scrap metal industry
- ▼ The Atlas Series features stress-engineered construction for a superior size-to-weight ratio
- ▼ Vertical tie-offs allow for efficient baling without the need for pre-processing. Six tie positions and wire guides allow for quick and easy ties, right through the bale chamber door
- ▼ Multiple hopper configurations available, including three-sided, extra wide, and skid-steer hopper units
- ▼ Produces a 60" x 30" x 48" size bale
- ▼ The programmable UL and CUL Listed controller permits automatic or manual cycling
- ▼ The full-penetration ram provides maximum compaction and full ejection
- ▼ Dual-interlock on the bale chamber door
- ▼ Optional above-ground or pit conveyors available



The Marathon Atlas ET Balers feature an hydraulic door latch.



The touchscreen enables full automatic and manual control with one touch. Screens may be customized, password protected, and are designed with alarm, diagnostic, and help screens.



High-efficiency power unit and electrical disconnect.



- Transfer Compactors
- Horizontal Balers
- Conveyors

MARATHON WARRANTY

The best coverage in the business

Marathon® Equipment is pleased to announce the release of our updated Warranty Coverage program. This warranty will take effect and be applicable on all products sold on or after June 1st, 2021. Note that this warranty plan is not retroactive to products sold prior to June 1st, 2021.

5 Yr. Structural, 1 Yr. Parts, 1 Yr. Labor

Marathon Compactor & Recycling Solutions Warranty

Our existing Signature Series® Warranty, Compactor Warranty, and Auger Warranties have been combined into a new Compaction Solutions Warranty. The Compaction Solutions Warranty includes 3-years structural warranty, 2-years part warranty, and 1-year labor warranty.

To learn more, visit: www.marathonequipment.com/warranty



Connected Collections®

1 BACK-OF-STORE CONNECTED ASSET SOLUTIONS



1 Focus on the front of the store, we've got the back.

The ultimate solution for peace of mind, efficiency, and productivity.

2 Marathon provides a full suite of value-added needs.

New and Marathon® Certified Remanufactured compactors and balers, digital connectivity, and waste stream monitoring to minimize your waste-related expenses and maximize recycling revenue.

Digital connectivity enables asset monitoring, assists with predictive maintenance, and connection to hauler operations.

Partnership with Marathon supports your long-term sustainability objectives - and provides documentary evidence of your performance.

3 All the information you need at the tips of your fingers.

3rd Eye provides a complete dashboard view of the waste and recycling programs for your entire enterprise.

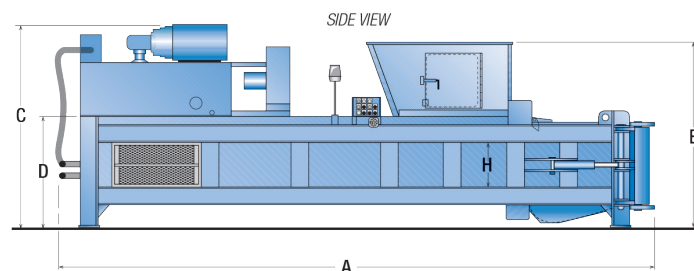
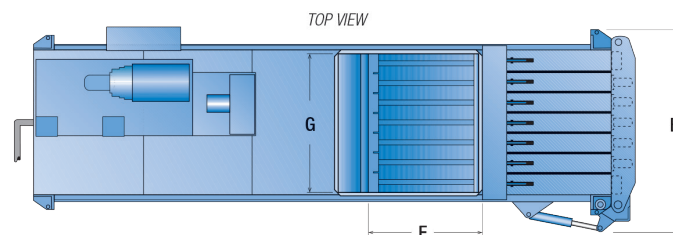
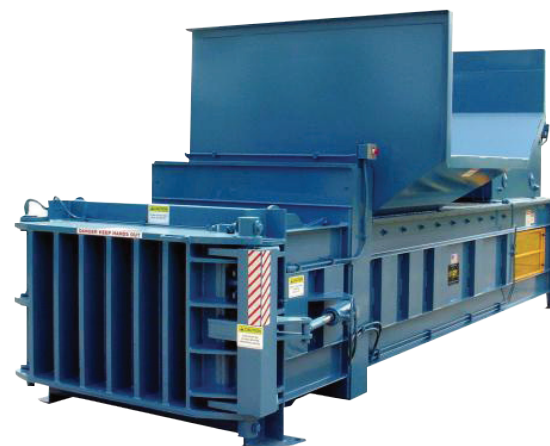
HORIZONTAL BALERS

Atlas ET

Dimensions and Specifications



Specifications		
Nominal Bale Size (W x H x L)	60" x 30" x 48"	1524mm x 762mm x 1219mm
Clear-Top Opening (L x W)	45" x 56"	1143mm x 1422mm
Unit Weight (dry)	28,000 lbs.	12701 kg
Performance Characteristics		
System Pressure	2,800 psi	193 bar
Platen Force	219,900 lbs.	978 kN
Platen Pressure	139 psi	958 kPa
Cycle Time (partial penetration)	22 seconds	
Electrical Equipment		
Electric Motor 3/60/230-460	50 hp	37 kW
Electric Control Voltage	120 VAC	
Hydraulic Equipment		
Pump Type	Vane	
Pump Capacity	94 gpm	356 lpm
Reservoir	200 gal.	757 L
Hydraulic Cylinder(s)	1	
Bore	10"	254mm
Rod	7"	178mm
Stroke	96"	2438mm



Dimensions	(A) Overall Length	(B) Overall Width	(C) Overall Height	(D) Body Height	(E) Feed Height	(F) Charge Box Length	(G) Charge Box Width	(H) Charge Box Height	Clear Top Opening (L x W)
Atlas ET	22' 10" (6960mm)	7' (2134mm)	93 3/4" (2381mm)	48 1/2" (1232mm)	6'-8" (2032mm)	45" (1143mm)	60" (1524mm)	29" (737mm)	45" x 56" (1143mm x 1422mm)

Pictures and mechanical diagrams in this literature are illustrative only and may not be to scale. Specifications are subject to change without notice in order to accommodate improvements to the equipment. Certified in compliance with ANSI standard Z245.2 and all applicable OSHA Regulations. Products must be used only by trained operators in accordance with the Operator Manual, as well as applicable regulations, laws, and ANSI standards.

We're Here To Help!

For detailed specifications, recommendations, or to request a site survey comparing various systems, contact the Marathon Customer Care team at: **800.633.8974**

Authorized Dealer:



Marathon Equipment Company | P.O. Box 1798 | Vernon, AL 35592-1798

Learn more about Marathon Equipment: **800.633.8974** | www.marathonequipment.com

© 2025 Marathon Equipment Company. All rights reserved.