

# STATIONARY COMPACTORS

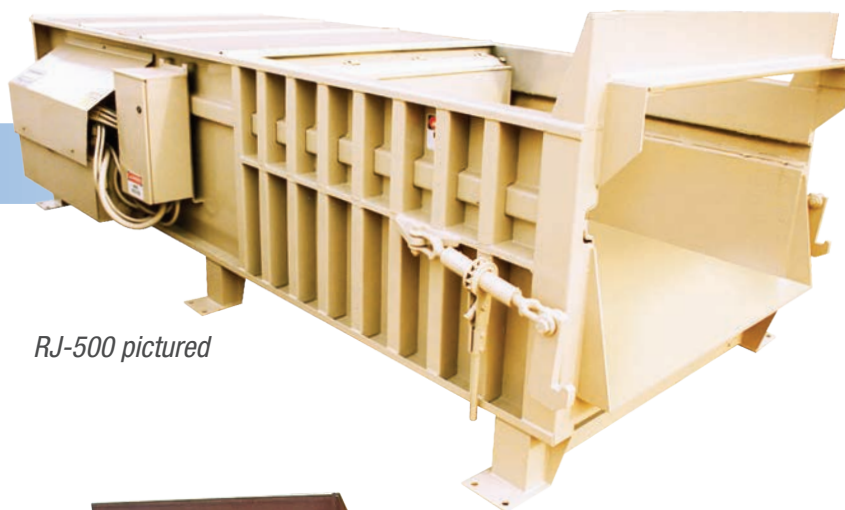


## RJ-500 & RJ-500HD

### Stationary Compactors

#### RJ-500 Features

- ▼ *Designed to handle heavy-duty waste streams*
- ▼ *Ideal for small transfer stations or municipal drop-off centers*
- ▼ *Heavy-duty design and high-compaction force yield excellent volume reduction with MSW and light C&D (HD model only) waste streams*
- ▼ *User-friendly 48" deck height keeps installation costs down*



*RJ-500 pictured*



*Tongue and groove floor standard on the RJ-500HD*

### The Worldwide Compaction Leader

Marathon® Equipment is known throughout the world as one of the leading manufacturers of quality on-site waste compaction products. The RamJet® brand has been the industry standard for quality and innovation for more than 50 years, and includes stationary and self-contained compactors, compaction containers, apartment and high-rise compactors, pre-crushers, auger-style compactors, transfer systems, and a wide array of options for virtually any application.



# STATIONARY COMPACTORS



## RJ-500 Compactor

### Overview

#### Perfect for:



Transfer Stations



Municipal Recycling Drop-Off Centers



Large Warehouses



Distribution Centers



Manufacturing Facilities



#### Ram Guide System

The packing ram is supported by specially formulated cast iron shoes which ride on replaceable wear strips. This exclusive design protects the charge box floor from the full force of the packing ram, extending its life and dramatically reducing compaction-robbing friction.



#### Control Station

The RJ-500 and RJ-500HD feature an advanced, simplified three-button control system. It is key-operated, fully automatic, and contained in a weatherproof NEMA 4 enclosure. Connected to the power pack with 13' (3.96m) of conduit, the controls can be located for operator convenience.

### Why Marathon Equipment Is the Preferred Choice

Marathon brand components are selected for longevity and minimum maintenance, with special attention given to the selection of high-duty cycle components. Stress engineering provides the optimum degree of structural integrity. Only the best materials are used and the highest standards of quality are observed in the manufacturing process.

The RamJet RJ-500 and RJ-500HD compactors feature an extra large clear top opening that accepts large, bulky items with ease. Ruggedly built to meet the challenge, these units pack a powerful crushing force, and provide the performance and reliability that only Marathon can provide.

### Industrial-Grade Systems

The RJ-500 and RJ-500HD feature industrial-grade electrical and hydraulic systems that are UL and CUL Listed. This means trouble-free operation and top performance year after year. The Marathon side-mounted power unit combines the convenience and easy maintenance that comes with a remote power pack with the space savings and ease-of-installation of an integrated power pack.



The RJ-500 and RJ-500HD come standard with the Marathon side-mounted power unit. The power unit offers the convenience and ease-of-maintenance of a remote power pack with the space savings of an integrated power unit.

### Transfer Station Applications

The RJ-500 and RJ-500HD can be fitted with a variety of material-handling equipment such as chutes, hoppers, and dumpers. Cart dumpers can be custom built to your specifications to accommodate existing cart systems.

### Remote Monitoring

Remote Monitoring Systems can be added to the RJ-500 and RJ-500HD as well as to many of our other most popular compactors. For information about adding remote monitoring, please contact your Marathon salesperson.



For more information or to order, call 1-800-633-8974 or visit us at [www.marathonequipment.com](http://www.marathonequipment.com)

# STATIONARY COMPACTORS



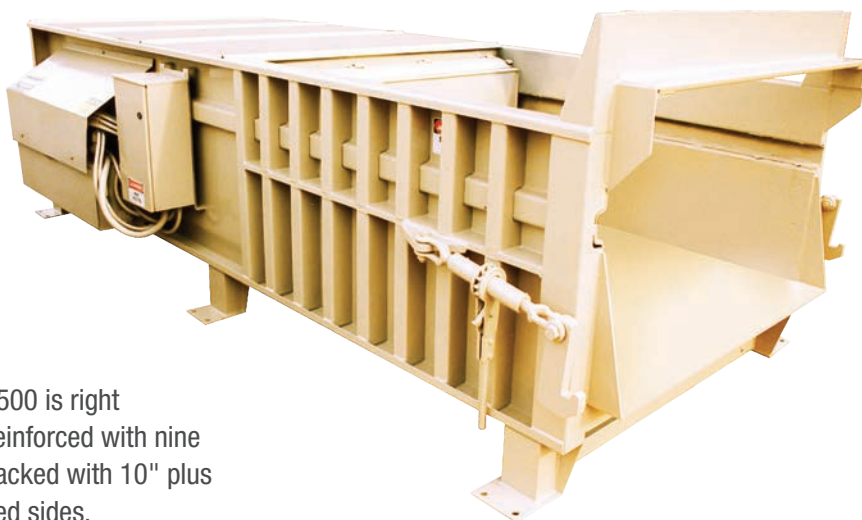
## RJ-500 Series Compactor

### Features & Specifications

#### Features

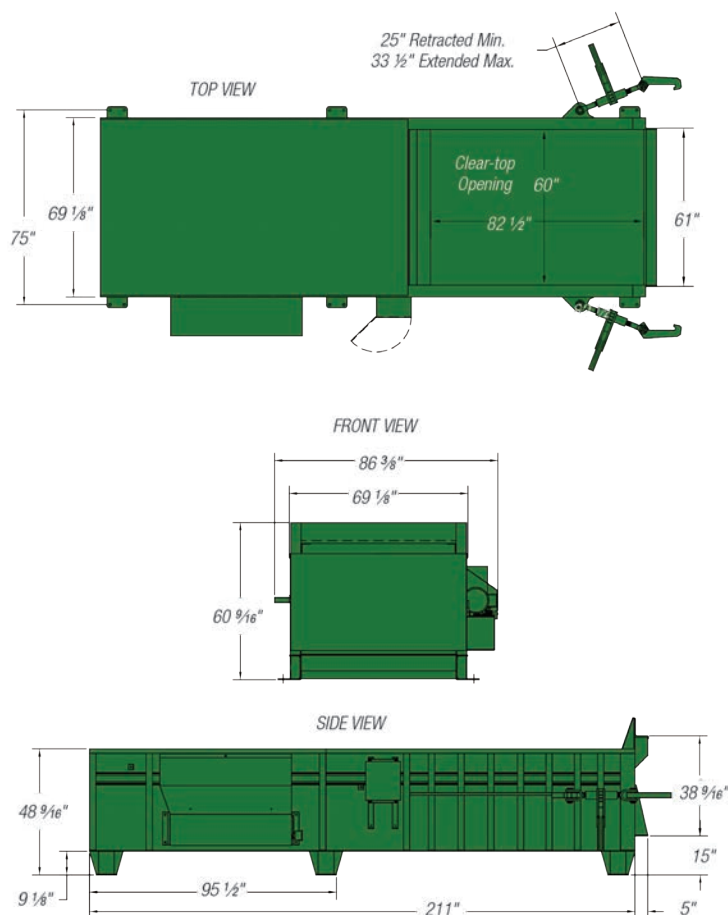
The Marathon RamJet RJ-500 compactor is a real workhorse! Its proven capability assures reliability and top performance in heavy-duty commercial and industrial applications.

- ▼ Large 60" wide by 82 1/2" long clear top opening and 33" deep charge box – a handy feature during peak loading times or when compacting bulky items.
- ▼ Engineered for durability, the strength of the RJ-500 is right where it is needed. The 1/2" charge box floor is reinforced with nine heavy-duty steel channels, 1/2" plate ram face backed with 10" plus 6" structural channels and extra rugged reinforced sides.



#### Dimensions & Specifications

Specifications		RJ-500	
Clear Top Opening (L x W)	82 1/2" x 60"	2096mm x 1524mm	
Compactor Capacity	3.17 yd³	2.42 m³	
Ram-Face Size (W x H)	60" x 29 1/2"	1524mm x 749mm	
Weight	8,500 lbs.	3586 kg	
Performance Characteristics			
Cycle Time	52 sec.		
Total Normal Force	65,400 lbs.	291 kN	
Total Maximum Force	76,900 lbs.	342 kN	
Normal Ram-Face Pressure	36.9 psi	255 kPa	
Maximum Ram-Face Pressure	43.4 psi	300 kPa	
Ram Penetration	13 1/2"	343mm	
Electrical Equipment			
Electric Motor 3/60/208/230/460/575	15 hp	11.2 kW	
Electric Control Voltage	120 VAC		
Standard Controls Include	3-Push Button Station Keylock Start/Stop/Reverse		
Hydraulic Equipment			
Hydraulic Pump	18.5 gpm	70 L/min	
Normal Pressure	1,700 psi	117 bar	
Maximum Pressure	2,000 psi	138 bar	
Switch Pressure	1,300 psi	90 bar	
Hydraulic Cylinder(s)	1		
Bore	7"	178mm	
Rod	4"	102mm	
Stroke	98"	2489.20mm	



Pictures and mechanical diagrams in this literature are illustrative only and may not be to scale. Specifications are subject to change without notice in order to accommodate improvements to the equipment. Certified in compliance with ANSI standard Z245.2 and all applicable OSHA Regulations. Products must be used only by trained operators in accordance with the Operator Manual, as well as applicable regulations, laws, and ANSI standards.



For more information or to order, call 1-800-633-8974 or visit us at [www.marathonequipment.com](http://www.marathonequipment.com)



# STATIONARY COMPACTORS



## RJ-500HD Heavy-Duty Compactor

### Features & Specifications

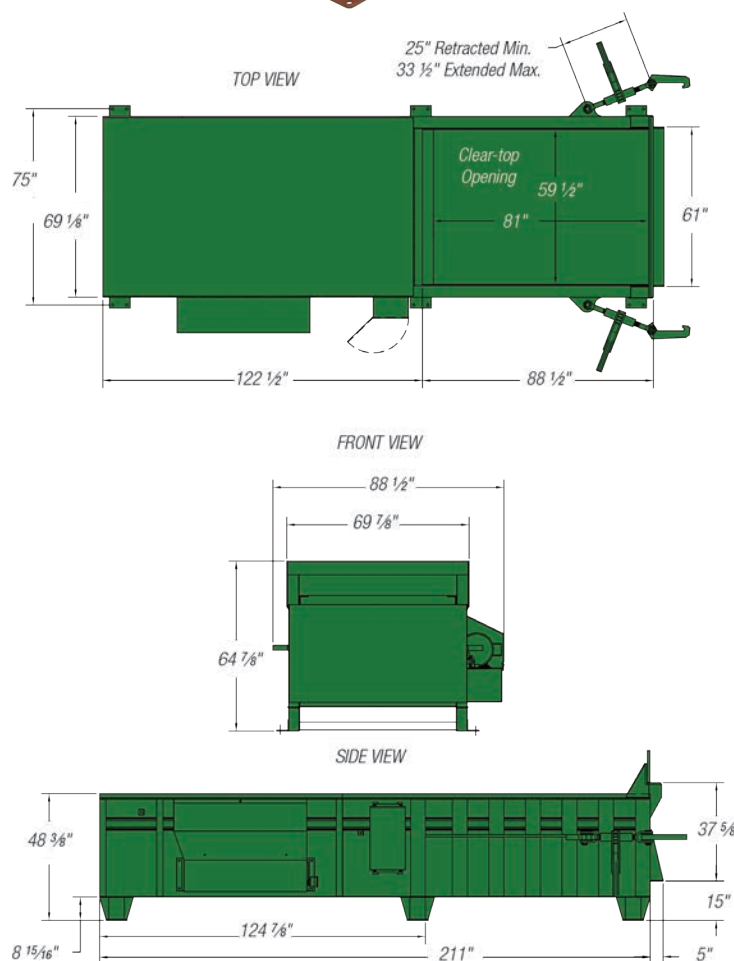
The RamJet RJ-500HD compactor's large 59 1/2" wide by 81" long clear top opening and superior strength makes it ideal for large volumes of crates, skids, and other hard-to-compact industrial refuse. Waste is crushed to a fraction of its original bulk.

- ▼ Cylinder supports, a 3/4" thick angle, 1" thick plate breaker bar, 1/2" ram top, and extra side supports are added for superior endurance.
- ▼ Includes standard 3/8" thick steel charge box liners and a 1/2" thick abrasion-resistant steel plate on the charge box floor. Also features a standard 1/2" AR400 tongue-and-groove floor.



### Dimensions & Specifications

Specifications		RJ-500HD	
Clear Top Opening (L x W)	81" x 59 1/2"	2057mm x 1511mm	
Compactor Capacity	3.12 yd³	2.39 m³	
Ram-Face Size (W x H)	59 1/2" x 29 1/2"	1511mm x 749mm	
Weight	10,300 lbs.	4,672 kg	
Performance Characteristics			
Cycle Time	52 sec.		
Total Normal Force	84,600 lbs.	376 kN	
Total Maximum Force	96,200 lbs.	428 kN	
Normal Ram-Face Pressure	48.2 psi	332 kPa	
Maximum Ram-Face Pressure	54.8 psi	378 kPa	
Ram Penetration	13 1/2"	343mm	
Electrical Equipment			
Electric Motor 3/60/208/230/460/575	20 hp	14.9kW	
Electric Control Voltage	120 VAC		
Standard Controls Include	Three-Push Button Station Keylock Start/Stop/Reverse		
Hydraulic Equipment			
Hydraulic Pump	18.5 gpm	70 L/min	
Normal Pressure	2,200 psi	152 bar	
Maximum Pressure	2,500 psi	172 bar	
Switch Pressure	1,300 psi	90 bar	
Hydraulic Cylinder(s)	1		
Bore	7"	178mm	
Rod	4"	102mm	
Stroke	98"	2489mm	



Pictures and mechanical diagrams in this literature are illustrative only and may not be to scale. Specifications are subject to change without notice in order to accommodate improvements to the equipment. Certified in compliance with ANSI standard Z245.2 and all applicable OSHA Regulations. Products must be used only by trained operators in accordance with the Operator Manual, as well as applicable regulations, laws, and ANSI standards.



Marathon Equipment Company | P.O. Box 1798 | Vernon, AL 35592-1798

Learn more about Marathon Equipment: 800.633.8974 | [www.marathonequipment.com](http://www.marathonequipment.com)

© 2025 Marathon Equipment Company. All rights reserved.